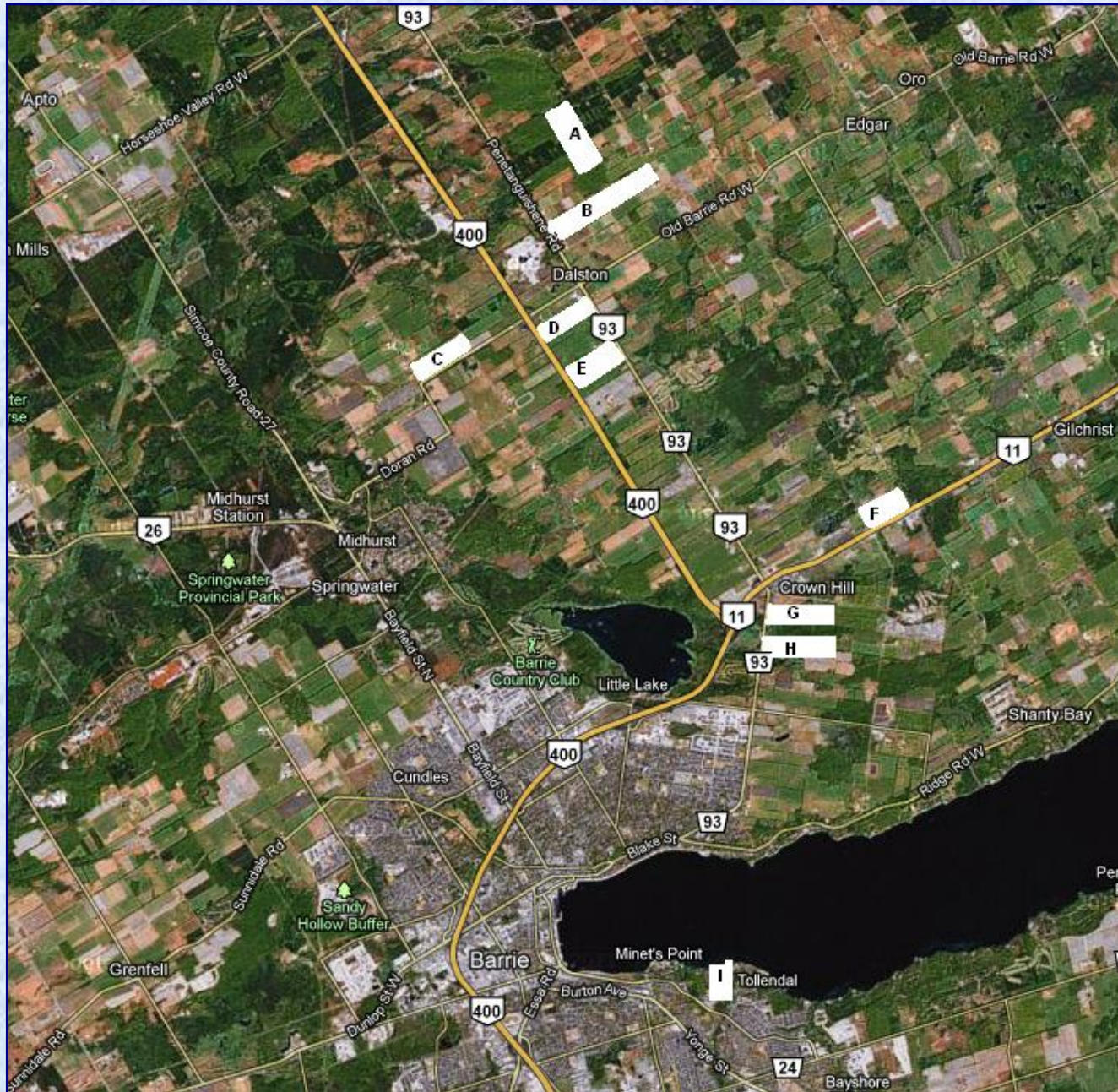


Map showing the Penetang Rd. where Joseph and Family settled c.1819



Approximate positions of the 'Lots' allocated to the family are shown on the map as follows:

A - Land purchased by Thomas

B - Joseph settled on this in 1819. Thomas bought it for taxes in 1856 and sold it to Edmund who sold it in 1866.

C - Edmund settled on this in 1836.

D - Thomas sold this to his son John for \$3,000. Bought by Walker Herbert Drury in 1921

E - Probably owned by Edmund because in 1881 his sons were farming it.

F - Richard owned this. A grist mill was set up by the creek and run by Richard's sons, Richard Jnr. and Thomas.

G - Later bought by Richard and farmed by his two sons William and Charles Alfred.

H - South 100 acres settled by Thomas. North by Richard

I - Also owned by Richard.